

## THUNDER Imager Cell Spinning Disk

Widefield

Spinning Disk

Spinning Disk + THUNDER

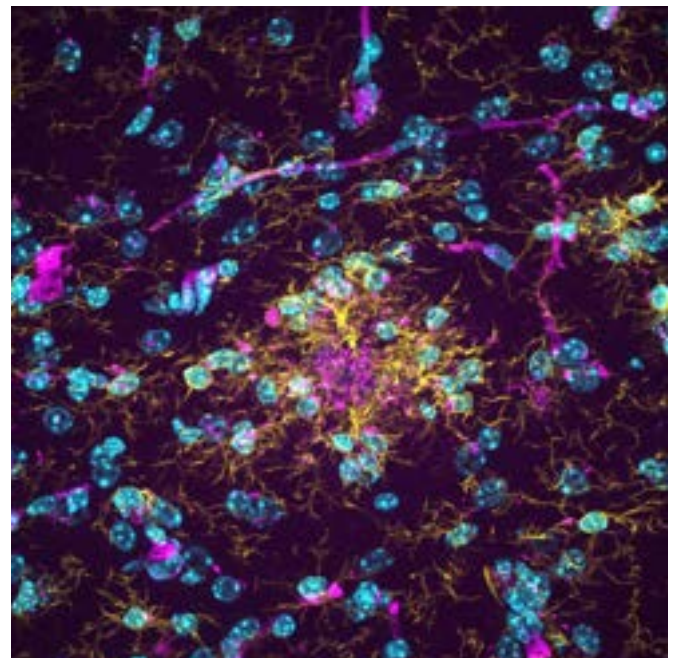
Get a clearer picture by combining the power of THUNDER technology with the CrestOptics CICERO spinning disk confocal.

While spinning disk alone provides powerful optical sectioning, applying THUNDER eliminates residual out-of-focus light for greater contrast and resolution, unlocking even more details.

### Benefit from:

- > More convincing, high-quality data
- > Fast, versatile, confocal imaging of diverse and challenging 3D samples
- > Streamlined workflows with intelligent automation: SmartCORR, Adaptive Immersion, Sample Finder

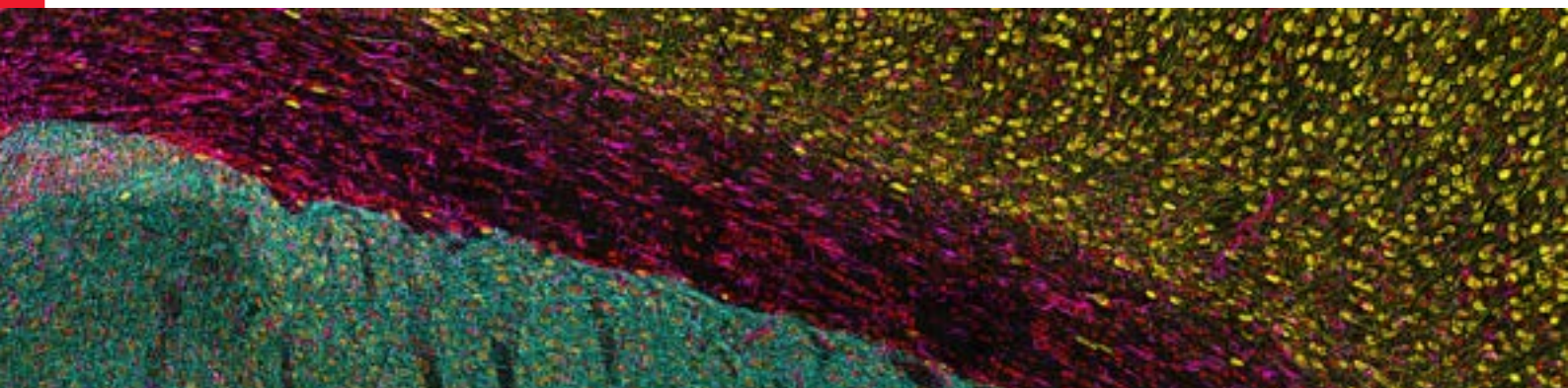
The THUNDER Imager Cell Spinning Disk is part of the THUNDER family of imaging systems.



Characterization of microglial morphology around brain plaques in app/ps1 mice. Sample courtesy of Patricia M. Tazo and Aroa S. Maroto, Silvia De Santis' laboratory, Instituto de Neurociencias CSIC-UMH, Alicante, Spain.



THUNDER Imager Cell Spinning Disk system with Okolab climate chamber, Adaptive Immersion and K8 and K7 cameras.



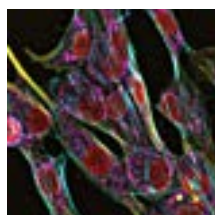
Rat brain slide provided by EnCor Biotechnology Inc. (RBC101223) stained with Hoechst, CPCA-GFAP, Fox/NeuN and RPCA-TH.

## Imaging diverse and challenging 3D samples

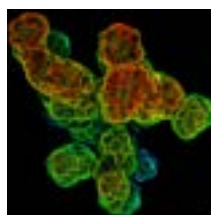
Get more statistically significant data from challenging 3D samples in less time with high-throughput spinning disk confocal. Image a wide variety of sample types with reduced phototoxicity - all in a simple-to-use and versatile platform.

### Image samples such as:

- > Live cells
- > 3D cell cultures
- > Organoids and spheroids
- > Model organisms
- > Thick tissue samples



A72 Cells



3D Cysts

### Technical Specifications

Spinning disk unit	CrestOptics CICERO
Imaging modes	Confocal and widefield
Pin hole size/pin hole spacing	50/250 $\mu$ m
Disk rotation speed	15,000 rpm
Emission filters	440/40 nm 525/50 nm 600/50 nm Quad D/F/T/Cy5
Lasers	89-North LDI4
Laser type	Multimode diode lasers
Laser lines	405 nm 300 mW 470 nm 1000 mW 555 nm 1000 mW 640 nm 400 mW
Widefield bypass filter cube	90% notch filter powers down lasers for use in widefield mode
Laser safety	Installed system is class 1 laser safe
Optional extras	THUNDER (2D/3D) opto-digital technology 40 x and 63 x adaptive immersion objectives SmartCORR Sample Finder Enhanced Navigator Incubation

CONNECT  
WITH US!



Leica Microsystems GmbH | Ernst-Leitz-Strasse 17–37 | D-35578 Wetzlar (Germany)  
Tel. +49 (0) 6441 29-0 | F +49 (0) 6441 29-2599

[www.leica-microsystems.com](http://www.leica-microsystems.com)