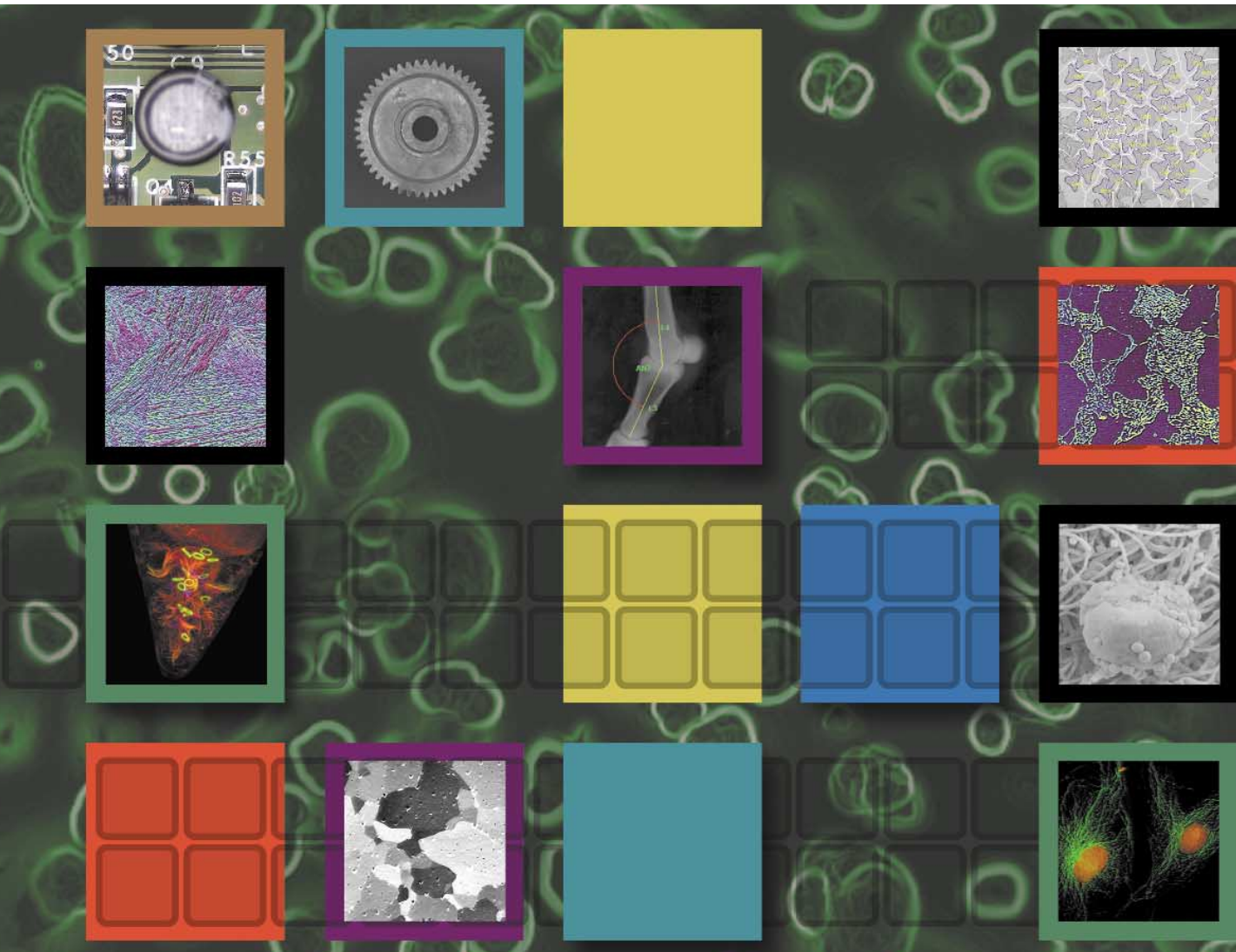


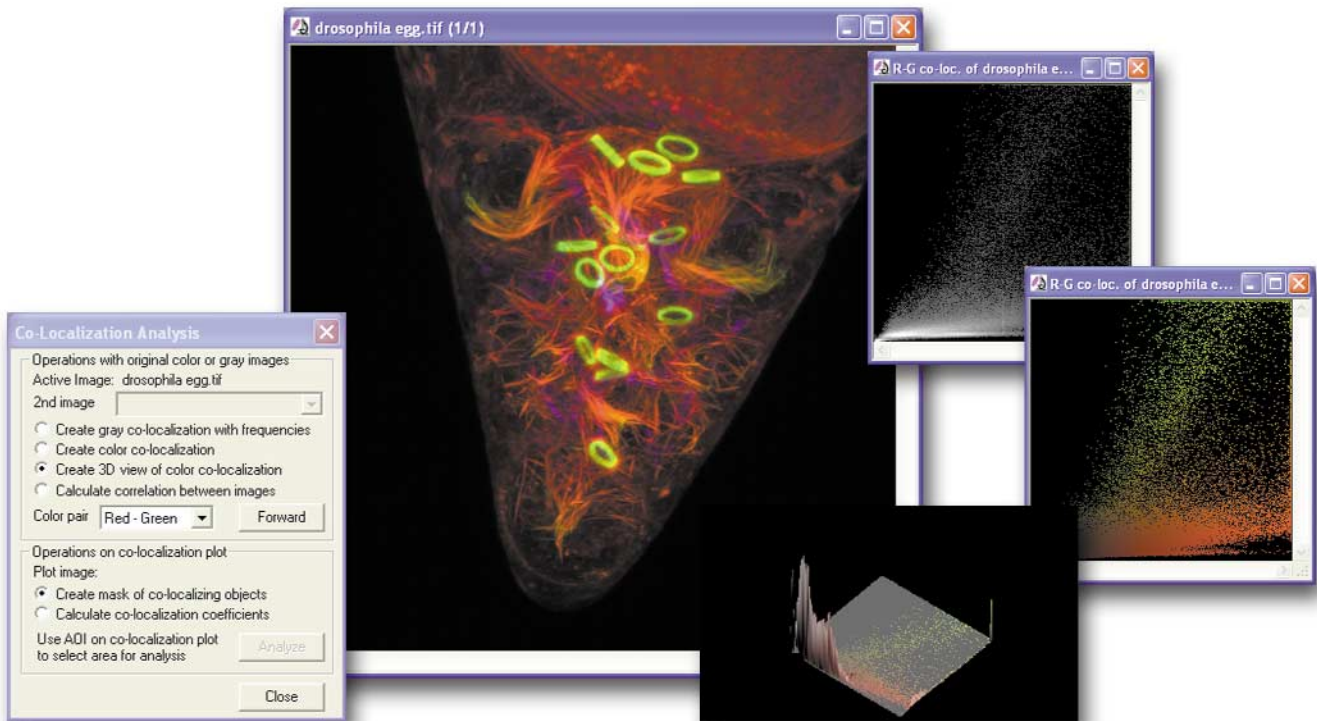
# IMAGE-PRO® PLUS



**THE ULTIMATE IMAGE ANALYSIS SOLUTION  
FROM THE IMAGE-PRO FAMILY**

# Image-Pro<sup>®</sup> PLUS

Measure co-localization of probes in separate gray scale images or within a color image



## Experience the Power and Functionality of Image-Pro Plus...

### From Images to Answers

Image-Pro Plus is the ultimate image analysis software package for fluorescence imaging, quality assurance, materials imaging, and various other scientific, medical, and industrial applications. The most powerful member of the Image-Pro software family, Image-Pro Plus includes extensive enhancement and measurement tools and allows you to write application-specific macros and plug-ins.

### Capture

Image-Pro Plus provides support for advanced digital cameras, sophisticated image capture cards, scanner devices, TWAIN, Video-for-Windows (VFW), and most confocal microscopy systems. As new devices are developed, drivers are made available on our website at [www.mediacy.com](http://www.mediacy.com).

### Enhance

Work with a variety of enhancement and image processing tools including:

- Extended Depth of Field to create focused composite images from a series of unfocused images
- Fast Fourier Transform (FFT)
- Extensive list of filters including Large Spectral Filters
- User-definable kernel sizes
- Background subtraction and correction
- Sequence Gallery for easy image preview

### Measure

Easily guarantee fast, accurate, and repeatable results with over 50 measurement options including:

- Length, area, perimeter, and angle tools
- Best-fit line, arc, and circle metrology tools
- Caliper tool for edge detection and measurement
- Automatic count and size tools
- Auto-trace feature to easily outline objects

### Analyze

Test, compare, and analyze your data for maximum results.

- Visualize image data with scattergrams, histograms, line profiles, and surface plot
- Produce gray scale, color, and 3D representations of co-localization with automatic measurements
- Add, subtract, or mask images with Boolean or arithmetic functions
- Export data to statistical and spreadsheet packages via Direct Data Export (DDE)
- Calculate statistics

### Track your Work

When combined with a robust company compliance system, the following features allow you to address concerns of governmental regulatory agencies:

- Audit Trail logs application events in Image-Pro Plus and records them to a printable text file
- File and Image Signature create "fingerprints" for individual files and images

Count and size objects automatically and display measurements as histograms and scattergrams



## Customize

Automate your research with the Auto-Pro programming language

- Compress lengthy operations into a single keystroke or mouse click
- Integrate and customize macros or plug-ins with Visual Basic or Visual C++

## Image Informatics

Transform the data you receive from images into answers with powerful image informatics tools:

- Generate custom formatted reports with images, data, and text
- Acquire, organize, store, retrieve, and send your images with the built-in Image-Pro Database

## Add Application-Specific Plug-Ins

Extend the functionality of Image-Pro Plus with seamlessly integrated Plug-In modules

- **Materials-Pro® Plug-In** is designed for industrial materials scientists and technicians who need improved solutions for quality control and product development
- **Scope-Pro® Plug-In** allows Image-Pro users to control and program the movement of their automated microscope, stage, filter wheels, etc.
- **AFA™ (Advanced Fluorescence Acquisition) Plug-In** offers an automated method to acquire fluorescent images in multiple dimensions
- **SharpStack™ Plug-In** extracts clear, sharp images from a stack of hazy planes
- **3D Constructor™ Plug-In** provides 3D reconstruction and visualization

## Join a Community

By taking advantage of all Image-Pro Plus has to offer, you will find yourself part of a worldwide imaging community.

- Share tips with others on our Image-Pro Email User's Group
- Search for application notes, device drivers, and more on our website at [www.mediacy.com](http://www.mediacy.com)
- Learn the basics of Image-Pro Plus or more advanced image analysis or programming skills through our variety of imaging training courses

## The Image-Pro Family

The Image-Pro software series reflects the maturity of over 20 years of development, evolution, and user feedback. We offer three unique Image-Pro packages to accommodate a variety of imaging needs.

### Image-Pro® Express

Perfect for basic imaging or for image capture stations, Image-Pro Express offers quick capture and enhancement tools.

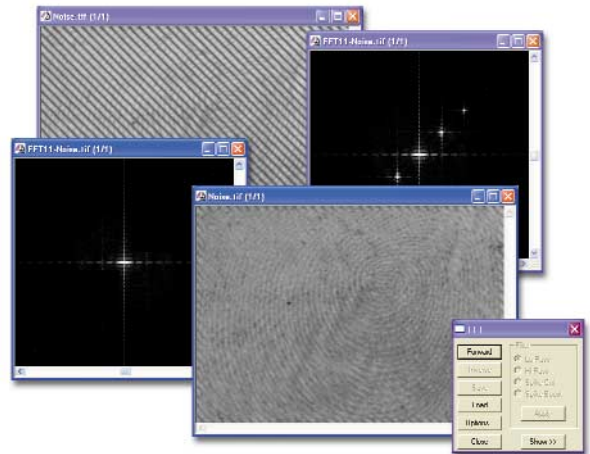
### Image-Pro® Discovery

More advanced than Image-Pro Express, Image-Pro Discovery offers added measurement and analysis capabilities.

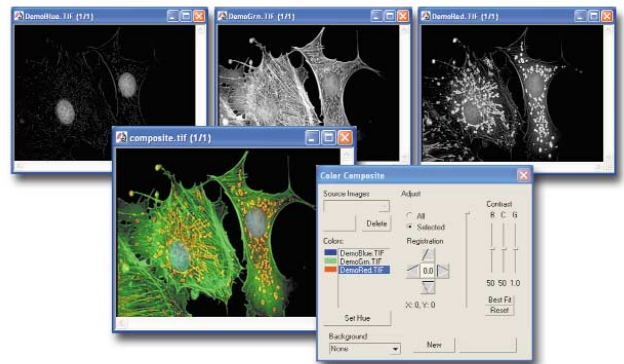
### Image-Pro® Plus

The ultimate imaging solution, Image-Pro Plus includes all of the features of Image-Pro Discovery along with added tools and the ability to write customized macros and plug-ins.

Create forward and inverse transforms with Fast Fourier Transform (FFT)



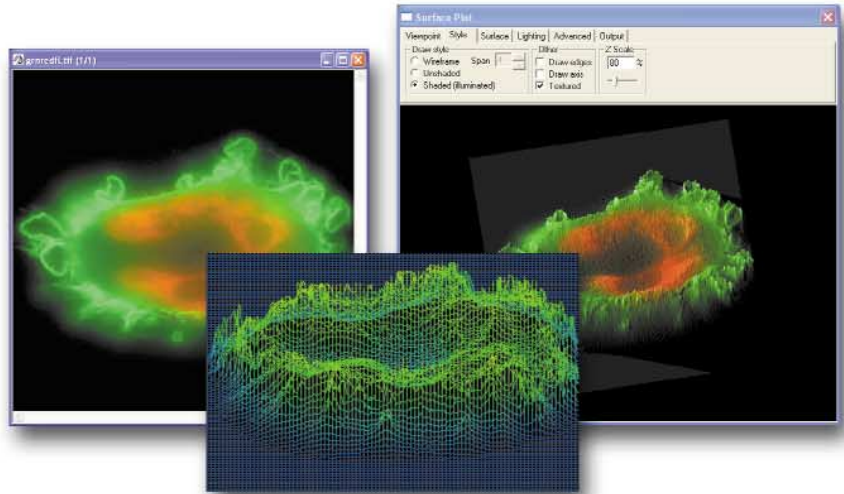
Create composite images from an infinite number of source gray scale images with Color Composite



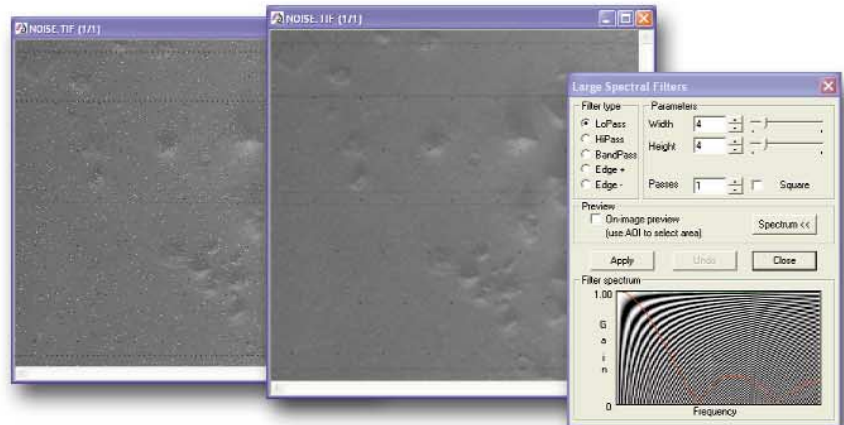
# Image-Pro<sup>®</sup> PLUS

## Image-Pro Plus Assists You With All of Your Imaging Needs...

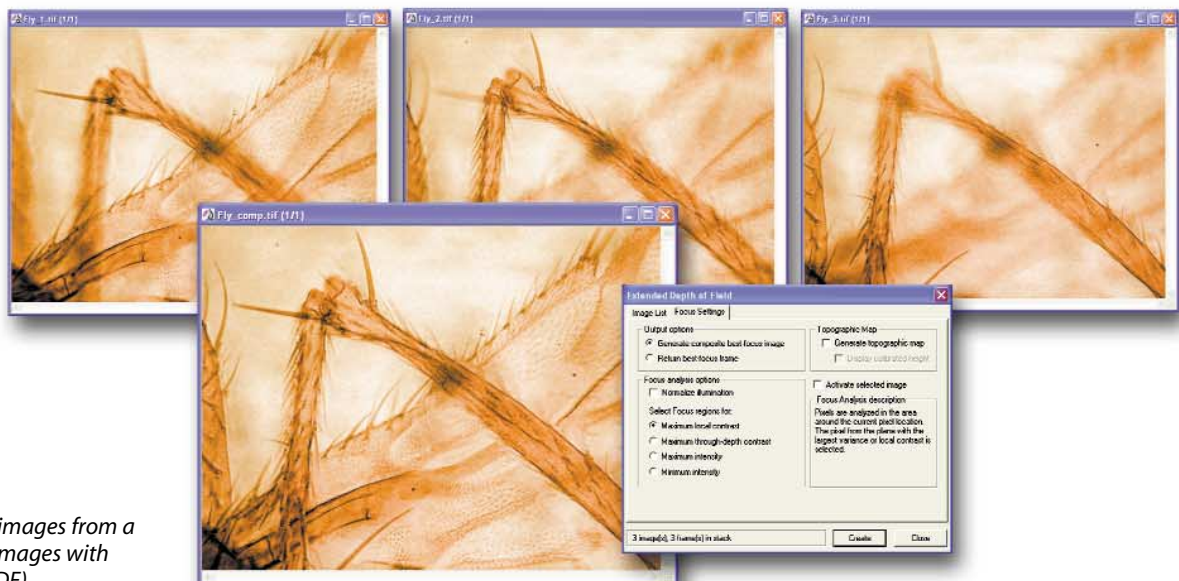
Image-Pro Plus includes numerous features that allow you to capture, communicate, process, measure, analyze, archive, customize, generate reports, and print. For more information and sample applications, visit [www.mediacy.com](http://www.mediacy.com).



Display image intensity values in a 3D plot with Surface Plot



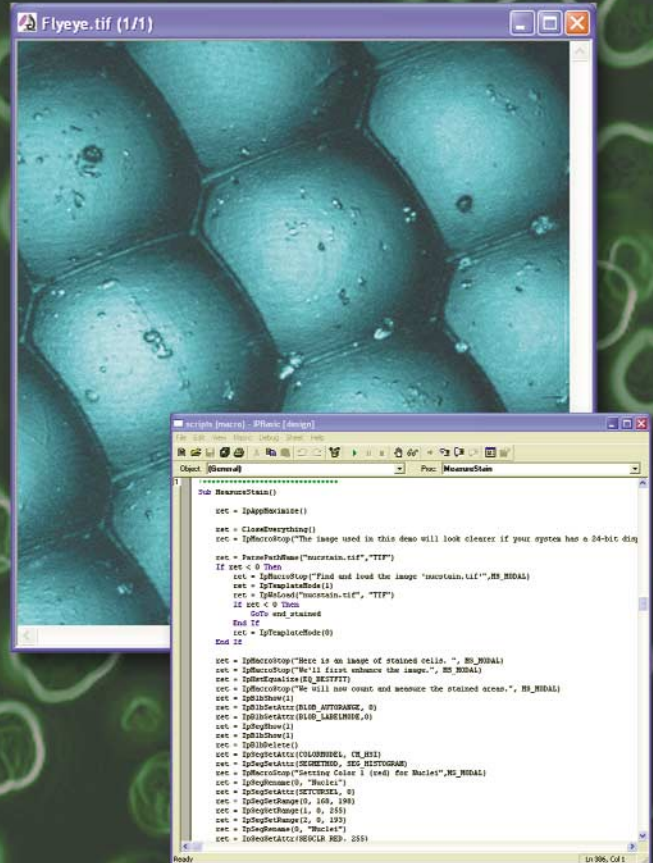
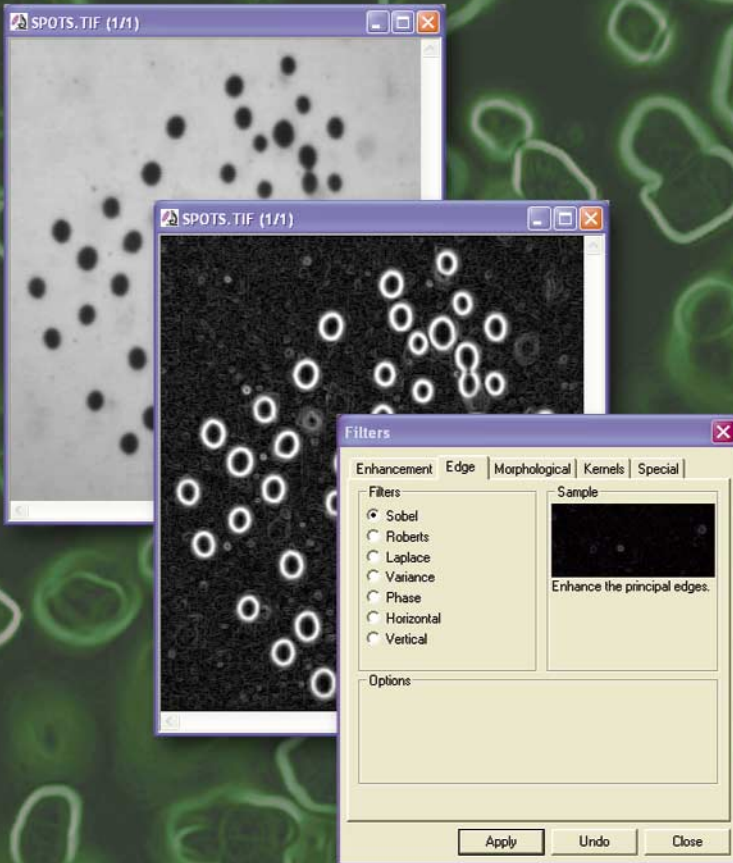
Increase filtering speed on images with large kernel size (up to 4000 x 4000) with Large Spectral Filters



Create in-focus composite images from a series of partially in-focus images with Extended Depth of Field (EDF)

**Outline objects with various edge filter methods including Sobel, Roberts, Laplace, Variance, Phase, Horizontal, and Vertical**

**Build custom applications that meet your specific imaging needs with Auto-Pro**



**OUR WORLDWIDE DEALER NETWORK IS THERE TO ASSIST YOU. FOR A DEALER IN YOUR AREA, CALL TODAY!**

**HEADQUARTERS**

**Media Cybernetics, Inc.**  
 8484 Georgia Avenue, Suite 200  
 Silver Spring, MD 20910 USA  
 Phone: +1.301.495.3305  
 Fax: +1.301.495.5964  
 Email: info@mediacy.com  
 Web: www.mediacy.com

**INTERNATIONAL OFFICES**

**South America:**  
 Phone: +55.11.4427.7803  
 Fax: +55.11.4427.9527

**Europe:**  
 Phone: +31.715.730.639  
 Fax: +31.715.730.640

**Asia Pacific:**  
 Phone: +65.6245.4965  
 Fax: +65.6245.4967

